



Mission: Innovation of live preys production, for aquaculture and home aquarium administration.

Products and Services:

Microalgae: Non-traditional microalgae – fitted for more demanding species. Optimal omega-3 and omega-6 balance.

Copepods: High mobility. Tends to stimulate predation movements. Have a large dimensions scope and excellent nutritional profile.

Technology: Ready to use production units, to allow high density growth of microalgae and copepods.

Microalgae

Rhodomonas lens
Isochrysis galbana
*Thalassiosira weissflogii**

Copepods

Acartia tonsa

Blend

Blend of phyto and zooplankton, fitted to your needs

Technology

Ready to use solutions, fitted for both aquaculture and home aquarium

Water saving: Our products are cultured in water recirculation systems

Microalgae grown in photobioreactor | Copepods grown in cilindro-conical tanks

* available soon



Implementation ISO 9001

Eco-friendly products

For more info, please contact
geral.penwave@gmail.com
pen-wave.org || [@pen.wave](https://www.instagram.com/pen.wave)

Docapesca - Porto de pesca
Armazém de comerciantes n° 62
2520-630 Peniche
Portugal

39° 21' 22" N 09° 22' 18" W

Acartia tonsa

Planktonic copepod specie that inhabits
brackish water

What is *Acartia tonsa*?

↑ Growth and
survival rate

↑ Feeding
responses

↑ Source of
lipids,protein
and carotene

↓ Malformations
and
malpigmentation



Biochemical composition

| | |
|-------------|------|
| Protein (%) | 36.5 |
| Ash (%) | 5 |
| Lipid (%) | 30 |
| PUFA (%) | 12.4 |

Physical and Organoleptic specifications

| | |
|---------------|---|
| Particle size | 0,06 to 1,2 mm |
| Appearance | Small organisms, with hop-like movement |
| Colour | Dark grey |
| Odour | Ocean-like |



Tailor-made solutions

What's your demand?

Tell us your requirements and we will provide you the
best and most fitting choice for your business.

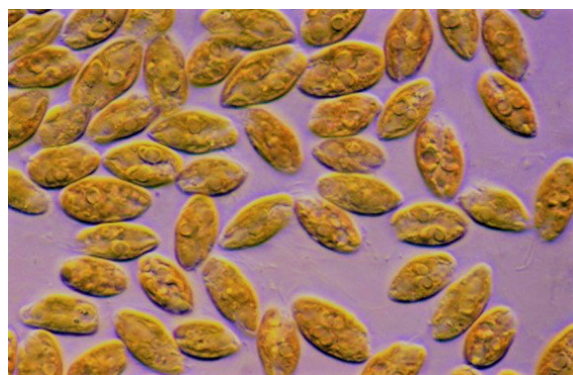
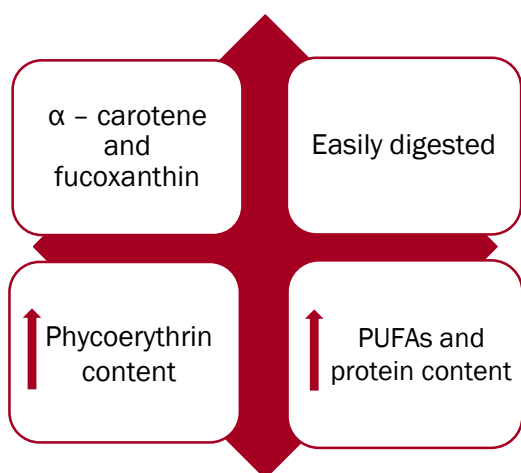
geral.penwave@gmail.com

39° 21' 22" N 09° 22' 18" W || Peniche, Portugal

Rhodomonas lens

Unicellular ovoid red microalgae.
Size ranging from 7-10µm.

What is *Rhodomonas lens*?



Rhodomonas lens Biochemical composition

| Biochemical composition | | Physical and Organoleptic specifications | |
|-------------------------|------------|--|--|
| Protein (%) | 62 | Particle size | Each microalgae cell ranges from 7 to 14µm |
| Ash (%) | 5,4 | Appearance | Reddish liquid |
| Lipid (%) | 23 | Colour | Reddish |
| PUFA (%) | 12 | Odour | Fish-like |



Main Properties: High essential amino acids content (High protein), High PUFA's/omega content, Rich in natural red pigments, Metabolic regulator, Boosts Immune system, Natural Pigment (phycoerythrin).

Applications in Aquaculture and Aquariums: Optimal live prey enrichment (Copepods, Rotifers, Artemia). Premium Microalgae with excellent nutritional, metabolic, immune and pigmentation results when used in live prey, fish larvae, shrimp, bivalvae and other marine organisms.

Tailor-made solutions

What's your demands?

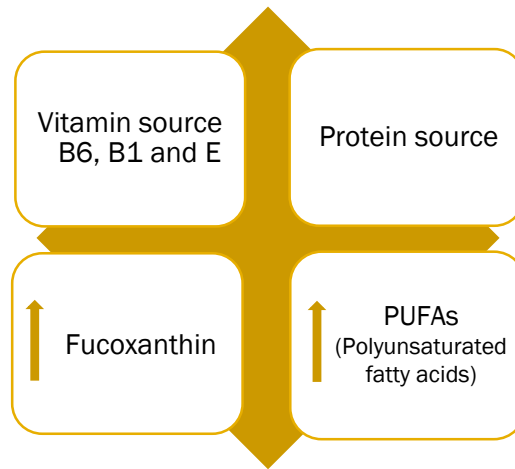
Tell us your requirements and we will provide you the best and most fitting choice for your business.

geral.penwave@gmail.com



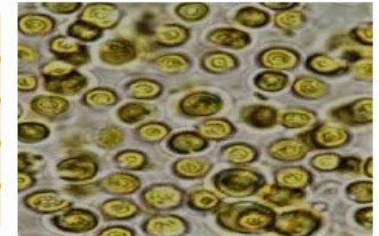
39° 21' 22" N 09° 22' 18" W || Peniche, Portugal

Isochrysis galbana



isochrysis galbana

| Biochemical composition | | Physical and Organoleptic specifications | |
|-------------------------|------------|--|-------------------------------|
| Protein (%) | 30 | Particle size | Each microalgae cell has 5 µm |
| Ash (%) | 6,5 | Appearance | Golden green |
| Lipid (%) | 42 | Colour | Golden green |
| PUFA (%) | 22 | Odour | Ocean-like |



Main properties: High omegas content (PUFAs), Metabolic regulator, Boosts Immune system, Natural Pigments and antioxidants (B-carotene, Fucoxanthin and more)

Applications in Aquaculture and Aquariums: Ideal for live prey enrichment (Copepods, Rotifers, Artemia). Premium feed in shellfish (all stages), larval fish and crustacean cultures. Green water technique.

Taylor-made solutions

What's your demands?

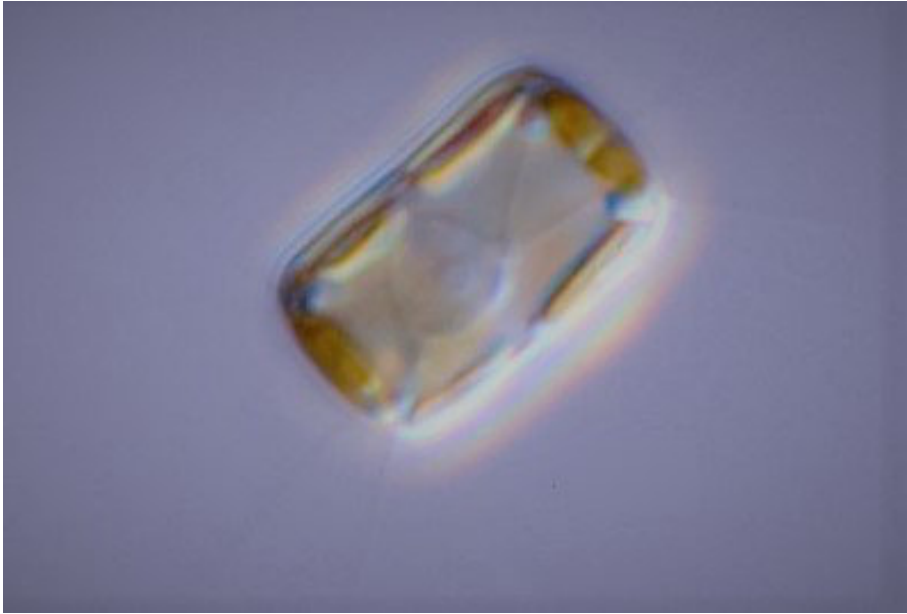
Tell us your requirements and we will provide you the best and most fitting choice for your business.

geral.penwave@gmail.com

39° 21' 22" N 09° 22' 18" W || Peniche, Portugal

Thalassiosira weissflogii

**Rich in bioactive compounds, essential nutrients and silica source.
Available soon.**



What's your demands?

Tell us your requirements and we will provide you the
best and most fitting choice for your business.

geral.penwave@gmail.com

39° 21' 22'' N 09° 22' 18'' W || Peniche, Portugal

Technology and services

Consulting and
scaling included

Ready-to-use
reactors

Support line,
for any
emergency

Installing
guaranteed



Fitted for sensitive species

Develop by marine biotechnologists

Ready-to-use

What's your demand?

Tell us your requirements and we will provide you the best and most fitting choice for
your business.

geral.penwave@gmail.com

39° 21'22"N 09° 22'18"W || Peniche, Portugal

PENWAVE